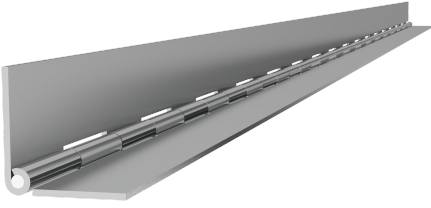


CONTINUOUS HINGE



Continuous hinge without holes, for weld-on mounting. Can be used for both left and right mounting.

The hinge is delivered in custom cut lengths or standard length 3500 mm. Minimum order quantity is applied for custom lengths.



MATERIAL

Hinge: Steel, untreated

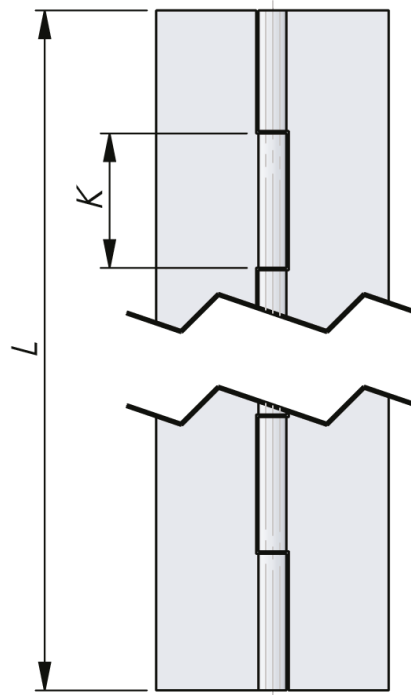
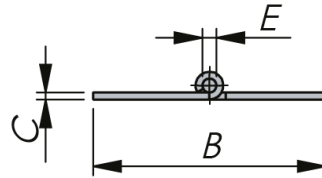
Pin: Steel

RELATED PRODUCTS

Other materials: 6-560

Similar products: 3-820

Use the Index Code at industrilas.com



Industrilas
— When access counts —

Continuous Hinge Without Holes - for Weld-On Mounting

B=	C=0,7 mm E=1,75 mm K=15 mm	C=1,0 mm E=1,75 mm K=15 mm	C=1,25 mm E=2,5 mm K=30 mm	C=1,5 mm E=3,0 mm K=30 mm	C=2,0 mm E=6,0 mm K=30 mm	C=3,0 mm E=6,0 mm K=30 mm
20	3520-010720- LLLL	3520-011020- LLLL	-	-	-	-
25	3520-010725-LLLL	3520-011025-LLLL	-	-	-	-
28	3520-010728- LLLL	3520-011028- LLLL	-	-	-	-
32	3520-010732-LLLL	3520-011032-LLLL	3520-021232-LLLL	3520-031532-LLLL	-	-
40	3520-010740- LLLL	3520-011040- LLLL	3520-021240- LLLL	3520-031540- LLLL	3520-062040- LLLL	3520-063040- LLLL
50	3520-010750- LLLL	3520-011050- LLLL	3520-021250- LLLL	3520-031550- LLLL	3520-062050- LLLL	3520-063050- LLLL
60	-	-	3520-021260- LLLL	3520-031560- LLLL	3520-062060- LLLL	3520-063060- LLLL
70	-	-	3520-021270- LLLL	3520-031570- LLLL	3520-062070- LLLL	3520-063070- LLLL
80	-	-	-	3520-031580- LLLL	3520-062080- LLLL	3520-063080- LLLL
100	-	-	-	-	3520-062010-LLLL	3520-063010-LLLL