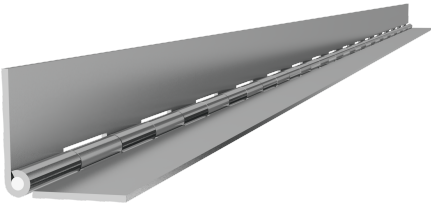


# CONTINUOUS HINGE STAINLESS STEEL



Continuous stainless steel hinge without holes suitable for weld-on mounting. Supplied in custom lengths according to your choice. The length L is stated in millimeters and inserted in the last positions of the part number, instead of the - LLLL. For instance, part number 3530-010720-0852 is 852 mm long.

Minimum order quantities applies when ordering custom lengths. Also available in standard length of 3 500 mm.



## MATERIAL

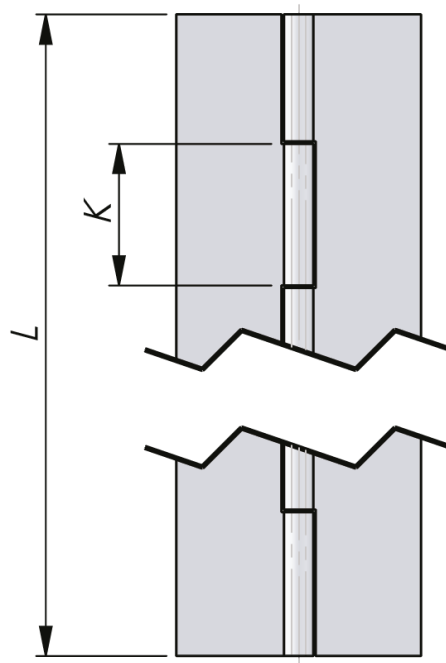
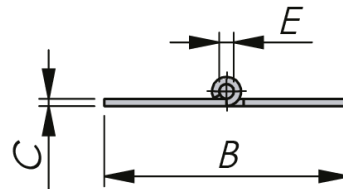
Hinge: Stainless steel 304

## RELATED PRODUCTS

Other materials: 3-830

Similar products: 6-550

Use the Index Code at [industrilas.com](http://industrilas.com)



**Industrilas**  
— When access counts —

**Continuous Hinge Without Holes - for Weld-On Mounting**

<b>B=</b>	<b>C=0,7 mm E= 1,75 mm K=15 mm</b>	<b>C=1,0 mm E= 1,75 mm K=15 mm</b>	<b>C=1,25 mm E= 2,5 mm K=30 mm</b>	<b>C=1,5 mm E= 3,0 mm K=30 mm</b>	<b>C=2,0 mm E= 6,0 mm K=30 mm</b>	<b>C=3,0 mm E= 6,0 mm K=30 mm</b>
20	3530-010720-XXXX	3530-011020-XXXX	-	-	-	-
25	3530-010725-XXXX	3530-011025-XXXX	-	-	-	-
28	3530-010728-XXXX	3530-011028-XXXX	-	-	-	-
32	3530-010732-XXXX	3530-011032-XXXX	3530-021232-XXXX	3530-031532-XXXX	-	-
40	3530-010740-XXXX	3530-011040-XXXX	3530-021240-XXXX	3530-031540-XXXX	3530-062040-XXXX	3530-063040-XXXX
50	3530-010750-XXXX	3530-011050-XXXX	3530-021250-XXXX	3530-031550-XXXX	3530-062050-XXXX	3530-063050-XXXX
60	-	-	3530-021260-XXXX	3530-031560-XXXX	3530-062060-XXXX	3530-063060-XXXX
70	-	-	3530-021270-XXXX	3530-031570-XXXX	3530-062070-XXXX	3530-063070-XXXX
80	-	-	-	3530-031580-XXXX	3530-062080-XXXX	3530-063080-XXXX
100	-	-	-	-	3530-062010-XXXX	3530-063010-XXXX