



KLIMA-FLEX 1 ALVANCA INTERNA

Alavanca interna para Klima-flex 1. Quando a alavanca interna é usada como uma maçaneta de emergência a maçaneta externa não deve ter chave.

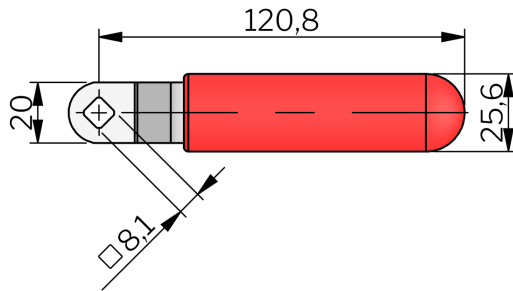
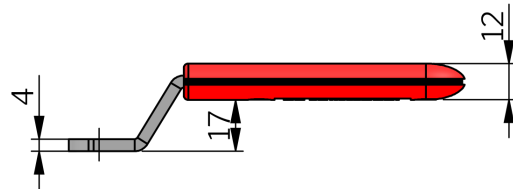
VDI
6022

MATERIAL

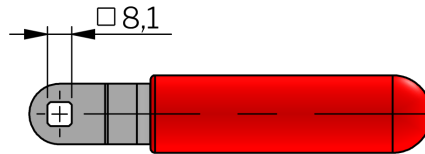
Maçaneta: Steel, red powder coated

TESTS & STANDARDS

Classifications: VDI 6022



265076-50



265076-52

P/N	Descrição	For locking unit
265076-50	Inside red handle, diagonal mounting	All
265076-51	Inside black handle, diagonal mounting	All
265076-52	Inside red handle, vertical/horizontal mounting	All
265076-53	Inside black handle, vertical/horizontal mounting	All

Industriilas
— When access counts —