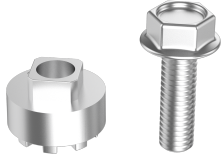


# VISION STANDARD CAM ADAPTER



Vision Inside latching system is mounted inside the sealed area and provides smooth compression and latching. IP65 when used with a Vision Swing Handle. Multiple latching points for adequate sealing in tall applications.

Control mechanism can be equipped with additional standard cam together with adapter for centre latching point. Control mechanism delivered assembled with flat rod. Latching points ordered separately.

System with more than four latching points is available.

## MATERIAL

**Adapter:** Zinc die cast, zinc plated

## RELATED PRODUCTS

**Needed components for a complete system:**

2-481

Use the Index Code at [industrilas.com](http://industrilas.com)

P/N	Description
131116-05	Adapter for use of roller cam on control mechanism
131116-07	Adapter for use of standard cam on control mechanism